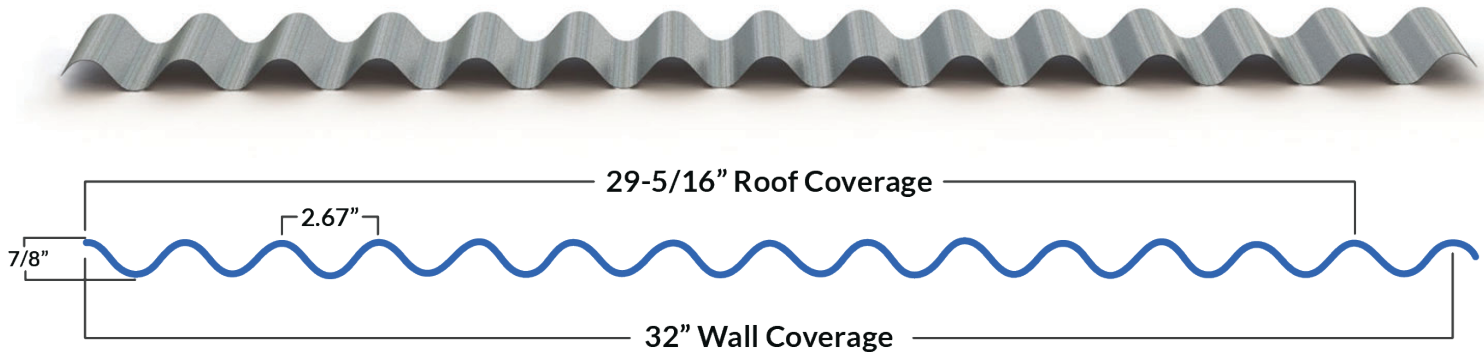


# 32-7/8" CORRUGATED

## Info Sheet



## Incredible Impact Resistance & Structural Stability

This high-strength panel features a wave-like profile ideal for a variety of applications from roofing to decorative accents. The corrugations measure 2.67" from crest to crest and produce a shadow effect that is both symmetrical and aesthetically pleasing.

With incredible impact resistance and exceptional structural stability, these panels are ideal in environments with high impact, wind, and snow volume.

### Applications: Roof & Wall

**Roof Coverage:** 29-5/16" with 2-rib overlap

**Wall Coverage:** 32" with 1-rib overlap

**Rib Height:** 7/8" at 2.67" centers

**Panel Length:** 32" to 50'

**Available Gauge:** 26

**Available in 20+ Standard Colours**

**Recommended Slope:** 3/12 with overlap sealant (*sealant required*)

**Note:** Confirm with construction standards and underlayment manufacturing

**Note:** More colours & gauges are available by special order

### Your Everything Panel



These panels are highly adaptable and are used in everything from modern residential designs, large-scale commercial projects, to agricultural barns. Install *vertically & horizontally* to achieve dynamic designs.

**EXPOSED  
FASTENER**  
— SERIES —

Visit Our Website at  
**FORMASTEEL.CA**

☎ (403) 553-3309


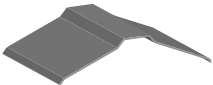

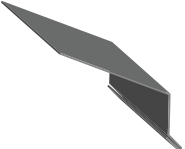



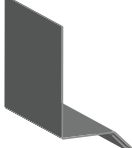
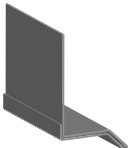
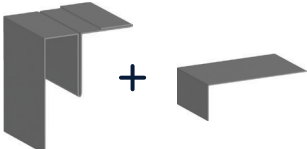
✉ [orders@formasteel.ca](mailto:orders@formasteel.ca)

\*Last Updated  
June 2025

## 32-7/8" CORRUGATED

**Recommended Trims**

Our trim codes will depend on your rib height/coverage of choice. Included on this sheet are the most commonly selected trims for this panel but **custom trims are available**. When selecting your trim, please ensure you indicate your gauge & colour of choice.

		
<b>J CHANNEL</b> 87J1	<b>RIDGE CAP</b> RC02	<b>OUTSIDE CORNER</b> 87OC
		
<b>EAVE</b> EV02	<b>GABLE</b> 87CG	<b>GABLE DIVIDER</b> 87GD
		
<b>END WALL</b> EW02	<b>BASE</b> 87D1	<b>HEADER</b> 87D2
 <b>2-PIECE INSIDE CORNER</b> 87IC & 87LF		

**Have Questions?**

Contact your Forma Steel Dealer for custom trim options, full trim lists, and measurements. Find a dealer near you on our website!

**Available in 20+ Standard Colours**

To view swatches of your colour options, [visit our website!](#)

**FOR COMPLETE INSTALLATION**

*Don't Forget the Accessories!*



Fasteners



Closures



Butyl Tape



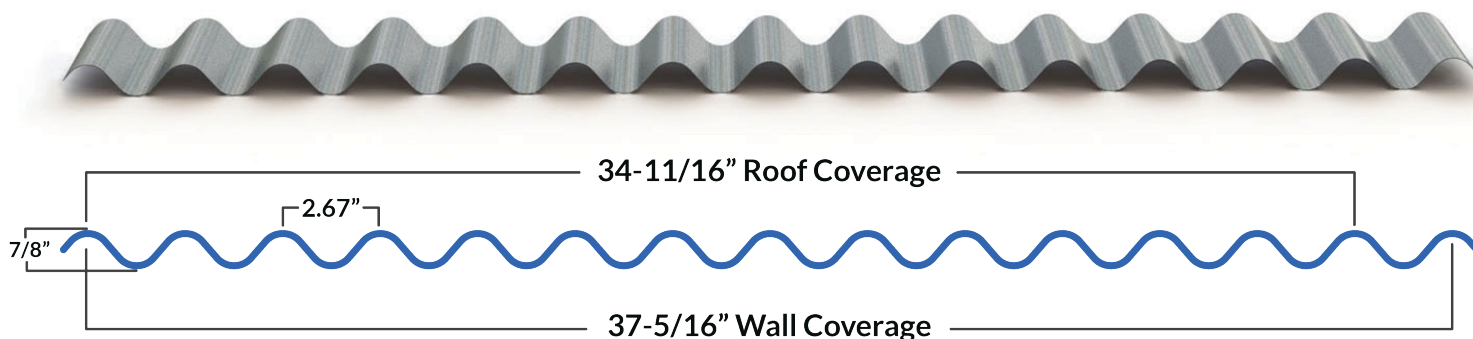
Weathertight Sealant



Sliding Door Hardware

# 37-7/8" CORRUGATED

## Info Sheet



## Incredible Impact Resistance & Structural Stability

This high-strength panel features a wave-like profile ideal for a variety of applications from roofing to decorative accents. The corrugations measure 2.67" from crest to crest and produce a shadow effect that is both symmetrical and aesthetically pleasing.

With incredible impact resistance and exceptional structural stability, these panels are ideal in environments with high impact, wind, and snow volume.

### Applications: Roof & Wall

**Roof Coverage:** 34-11/16" with 2-rib overlap

**Wall Coverage:** 37.313" with 1-rib overlap

**Rib Height:** 7/8" at 2.67" centers

**Panel Length:** 32" to 50'

**Available Gauge:** 24

**Available in 40+ Standard Colours & Specialty Finishes**

**Recommended Slope:** 3/12 with overlap sealant (*sealant required*)

**Note:** Confirm with construction standards and underlayment manufacturing

More colours & gauges are available by special order

### Available Specialty Finishes



All the same benefits as our 32-7/8" **Corrugated Panel** but with specialty finishes like woodgrains, textures, weathering steel, and more!

*Pictured is our Weathering Steel.*

**EXPOSED  
FASTENER**  
— SERIES —

Visit Our Website at  
**FORMASTEEL.CA**

☎ (403) 553-3309

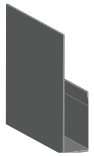
✉ [orders@formasteel.ca](mailto:orders@formasteel.ca)

\*Last Updated  
August 2024

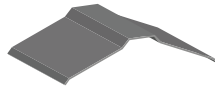
## 37-7/8" CORRUGATED

Recommended *Trims*

Our trim codes will depend on your rib height/coverage of choice. Included on this sheet are the most commonly selected trims for this panel but **custom trims are available**. When selecting your trim, please ensure you indicate your gauge & colour of choice.



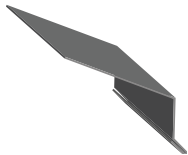
**J CHANNEL**  
87J1



**RIDGE CAP**  
RC02



**OUTSIDE CORNER**  
87OC



**EAVE**  
EV02



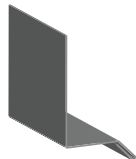
**GABLE**  
87CG



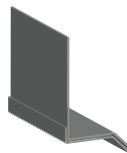
**GABLE DIVIDER**  
87GD



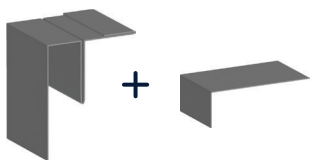
**END WALL**  
EW02



**BASE**  
87D1



**HEADER**  
87D2



**2-PIECE INSIDE CORNER**  
87IC & 87LF

**Have Questions?**

Contact your Forma Steel Dealer for custom trim options, full trim lists, and measurements. Find a dealer near you on our website!

**40+ Standard Colours & Specialty Finishes**

To view swatches of your colour options, [visit our website!](#)

**FOR COMPLETE INSTALLATION**

*Don't Forget the Accessories!*



*Fasteners*



*Closures*



*Butyl Tape*



*Weathertight Sealant*



*Sliding Door Hardware*