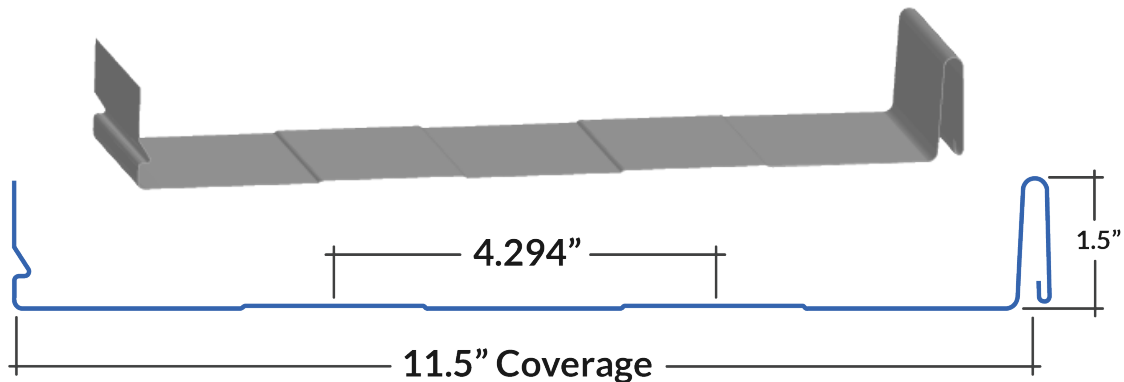


CLIPLOC

Info Sheet



Floating Clip Panel System

The **ClipLoc** panel system provides the ease of installation, like our **Nail Strip** panel, but with the flexibility of a concealed floating clip system. Clips allow the panels to expand and contract with the temperature changes without causing strain or tension on panels or fasteners.

ClipLoc panels are available with striations or minor ribs, which we recommend to minimize the appearance of oil-canning.

Applications: Roof & Wall

Coverages: 11.5" & 16" (custom: 7.5" to 19.5") | **Depth:** 1.5"

Panel Length: Up to 50' (minimum length: 36")

Available Gauge: 24

Available in 40+ Standard Colours & Specialty Finishes

Substrate: 5/8" standard plywood minimum / Purlins

Suitable for low sloped roofs down to 1.5/12 or 3/12

Note: Confirm with construction standards and underlayment manufacturing

Allows for expansion without the use of a seaming tool

Note: Extended lead times may apply for custom widths

Highly Customizable



Easily achieve a completely custom & unique look by using a combination of our available widths interchangeably on your exteriors.

ELEVATE
SERIES

Visit Our Website at
FORMASTEEL.CA

(403) 553-3309
orders@formasteel.ca

*Last Updated
May 2025

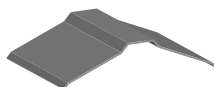
CLIPLOC

Recommended *Trims*

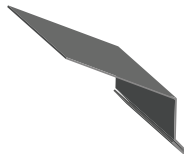
Our trim codes will depend on your rib height/coverage of choice. Included on this sheet are the most commonly selected trims for this panel but *custom trims are available*. When selecting your trim, please ensure you indicate your gauge & colour of choice.



J CHANNEL
10J1 or 15J1



RIDGE CAP
FLHR01



EAVE
EV03



END WALL
EW01

Have Questions?
Contact your *Forma Steel Dealer* for custom trim options, full trim lists, and measurements. Find a dealer near you on our website!



40+ Standard Colours & Specialty Finishes
To view swatches of your colour options, [visit our website!](#)

FOR COMPLETE
INSTALLATION

Don't Forget the Accessories!



Clips



Fasteners



ROYAL BLUE



ROYAL BLUE