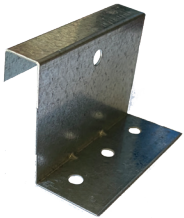


Find the right clip to install your panel system. If you are unsure of what type of installation is needed, please contact the Forma Steel Order Desk for more assistance.



2" Mechanical Loc Clip: Fixed

Used with 2" Mechanical Loc Panel for Fixed Installation
Galvanized
22 Gauge
C52MECHLOCFX22G90



1.5" Mechanical Loc Clip: Fixed

Used with 1.5" Mechanical Loc Panel for Fixed Installation
Galvanized
18 Gauge



2" Mechanical Loc Clip: Floating

Used with 2" Mechanical Loc Panel for Floating Installation
UL Listed
Galvanized
18/22 Gauge
C52MECHLOCFLUL18X22



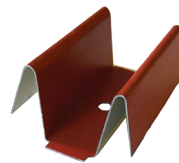
1.5" Mechanical Loc Clip: Floating

Used with 1.5" Mechanical Loc Panel for Floating Installation
Galvanized
18/22 Gauge



1.5" Cliploc Clip

Used with 1.5" ClipLoc Installation
Galvanized
18 Gauge
CS15CLIPLOC18G90



Wide Batten Clip

Used with some Custom Batten Panel Installations
Galvanized
26 Gauge
CSWB26G90



Siding Clip

Used with Board & Batten, Forma Plank & Shiplap Panel Installation
Galvanized
20 Gauge
CSSIDING20G90



Siding Clip - Stainless Steel

Used with Weathering Steel Hidden Fastener Panel Installations
Stainless Steel
22 Gauge
CSBC2H22SS