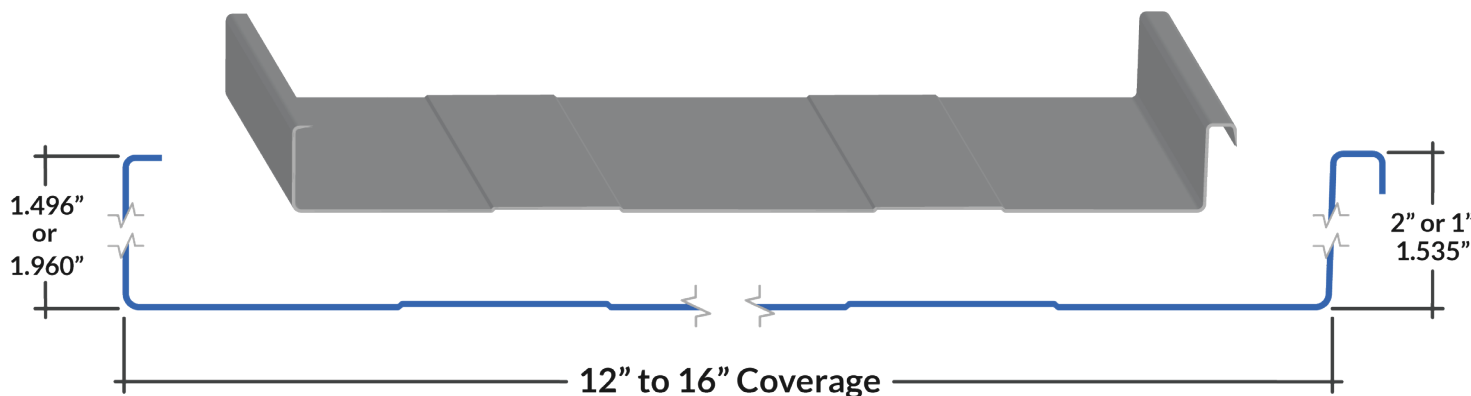


MECHANICAL LOC

Info Sheet



Standing Seam *Panel System*

The **Mechanical Loc** panel is a commercial grade panel that is mechanically seamed and installed with a concealed clip system. This panel offers long clean lines and wide variable widths. A suitable choice for climates with high wind, high snow accumulation, and extreme temperatures. Ideal for shallow sloped roofs and is available in 1", 1.5" and 2" seam heights. Available with either minor ribs or striations. Striations are recommended on panels to minimize the appearance of oil-canning.

The use of proper underlayment is vital to the performance of any roofing system, we recommend the use of a peel and stick membrane for any slopes lower than 3:12.

Applications: Roof & Wall

Coverages: 12" to 16" | **Seam Heights:** 1" or 1.5" or 2"

Panel Length: Up to 50' (minimum length: 12")

Available Gauge: 24

Available in 40+ Standard Colours & Specialty Finishes

Substrate: 5/8" standard plywood minimum (1/2" for walls)

Minimum Slopes: 1" = 3:12 | 1.5" = 1.5:12 | 2" = 3/4:12

Note: Confirm with construction standards and underlayment manufacturing

Requires seamer tool (inquire about our rental options)

Weather-Tight Protection



The **Mechanical Loc** panel system provides superior weather-tight protection and allows for thermal expansion and contraction with a floating clip system.

ELEVATE
S E R I E S

Visit Our Website at
FORMASTEEL.CA

(403) 553-3309

orders@formasteel.ca

*Last Updated
August 2024

MECHANICAL LOC

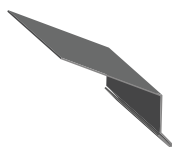
Recommended *Trims*

Our trim codes will depend on your rib height/coverage of choice. Included on this sheet are the most commonly selected trims for this panel but *custom trims are available*. When selecting your trim, please ensure you indicate your gauge & colour of choice.

1" Seam Height



RIDGE CAP
FLHR01



EAVE
EV03

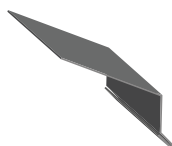


END WALL
EW01

1.5" Seam Height



RIDGE CAP
FLHR01



EAVE
EV03

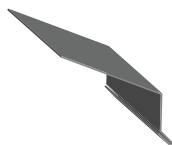


END WALL
EW01

2" Seam Height



RIDGE CAP
FLHR01



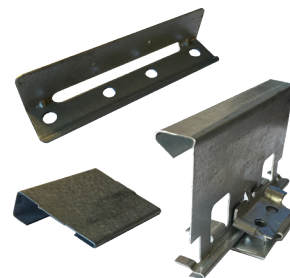
EAVE
EV03



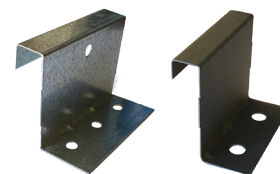
END WALL
EW01

FOR COMPLETE
INSTALLATION

Don't Forget the Accessories!



Clips (Floating)



Clips (Fixed)



Fasteners

**Installation tools are available*

Have Questions? Contact your Forma Steel Dealer for custom trim options, full trim lists, and measurements. Find a dealer near you on our website!



40+ Standard Colours & Specialty Finishes

To view swatches of your colour options, [visit our website!](#)

Need Help Installing?

To view the full breakdown of instructions, including visual aids, please refer to our *Mechanical Loc Installation Guide* on our website.